

ROAD INDEX

(H.V.) = HUNTING VALLEY (S.R.) = SOUTH RUSSELL

A	ALDERWOOD TR (S.R.)	CE	H	H	H	Q	Q
B	ALEXANDER DR (PVT)	CG	H	H	H	Q	Q
C	AVONDALE DR (S.R.)	CH	H	H	H	Q	Q
D	BARKWOOD DR (S.R.)	CI	H	H	H	Q	Q
E	BEECHWOOD DR	CJ	H	H	H	Q	Q
F	BELLE VERNON BR	CK	H	H	H	Q	Q
1	BERRY DR (PVT)	CL	H	H	H	Q	Q
2	BIRCHWOOD DR	CM	H	H	H	Q	Q
3	BIRCHWOOD DR	CN	H	H	H	Q	Q
4	BIRCHWOOD DR	CO	H	H	H	Q	Q
5	BIRCHWOOD DR	CP	H	H	H	Q	Q
6	BIRCHWOOD DR	CQ	H	H	H	Q	Q
7	BIRCHWOOD DR	CR	H	H	H	Q	Q

TRM-REDI
 1-800-345-7334
 SCALE 1/100 OF AN INCH

(1) WEST WOOD ELEM. SCHOOL
 (2) RUSSELL ELEM. SCHOOL
 (3) RIVERVIEW BIBLE BAPTIST CH.
 (4) RIVERVIEW MEMORIAL PARK CEMETERY
 (5) RIVERVIEW CEMETERY
 (6) RUSSELL TOWN HALL

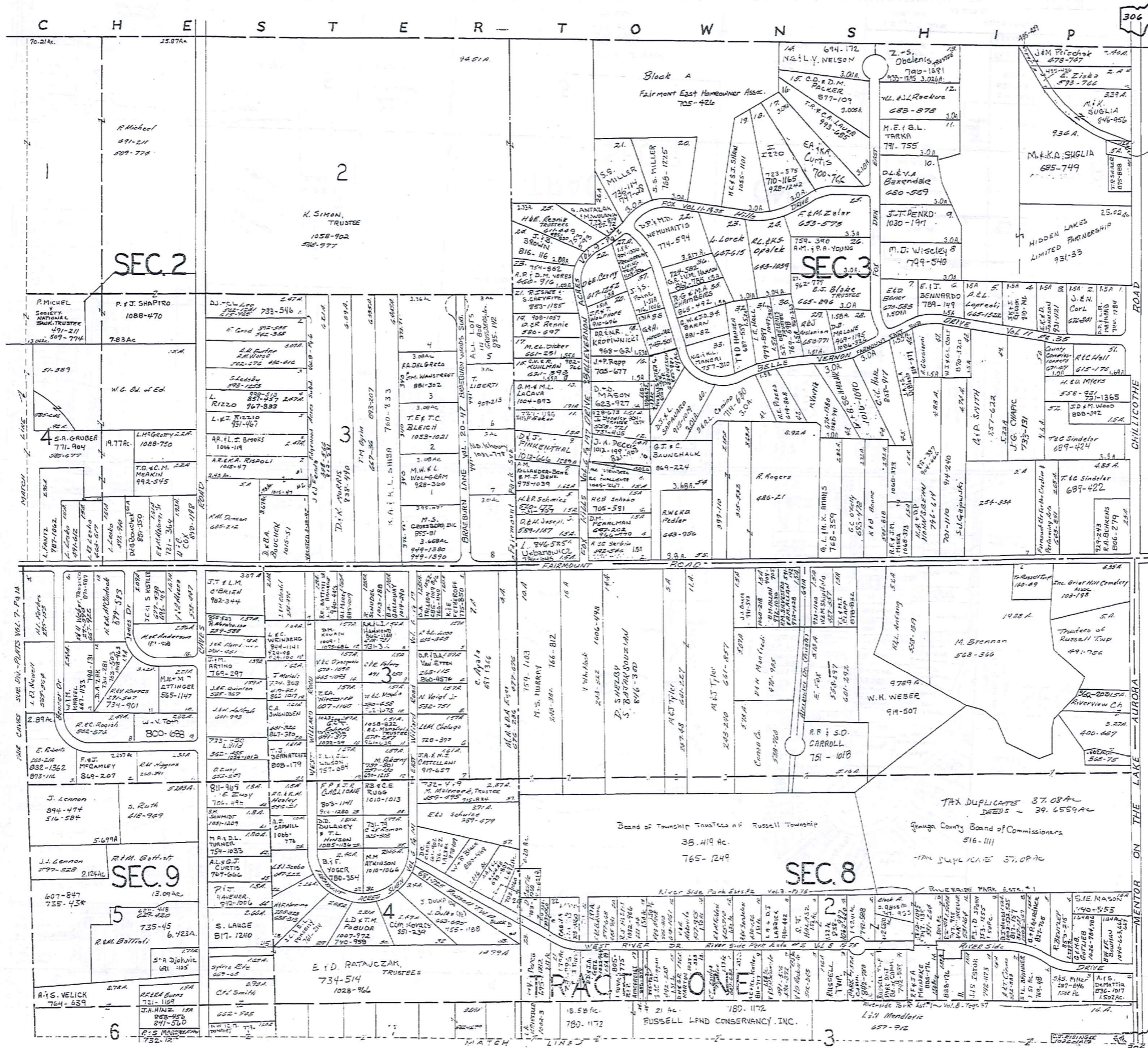
(7) SOUTH RUSSELL VILLAGE HALL
 (8) RUSSELL FIRE DEPARTMENT
 (9) U.S. POST OFFICE (NOVELTY, OHIO)

RUSSELL TOWNSHIP

SCALE: 1" = 2000'

ROBERT L. PHILLIPS,
 GEauga COUNTY ENGINEER

- - - - UNPAVED ROAD
 = = = = PAVED ROAD
 - - - - RAILROAD
 - - - - TOWNSHIP LINE
 - - - - COUNTY LINE
 - - - - CORPORATION LINE



SCALE 1"=300'

TRIM-REMI 1-800-345-7334
 SCALE IN 1/100 OF AN INCH

* Inadequate description

JANUARY 1, 1997

A	B	C	D
E	F	G	H
I	J	K	L
M	N	O	P

RUSSELL-B

RELATIVE REPRESENTATION

Board of Township Trustees of Russell Township
35.419 Ac.
765-1249

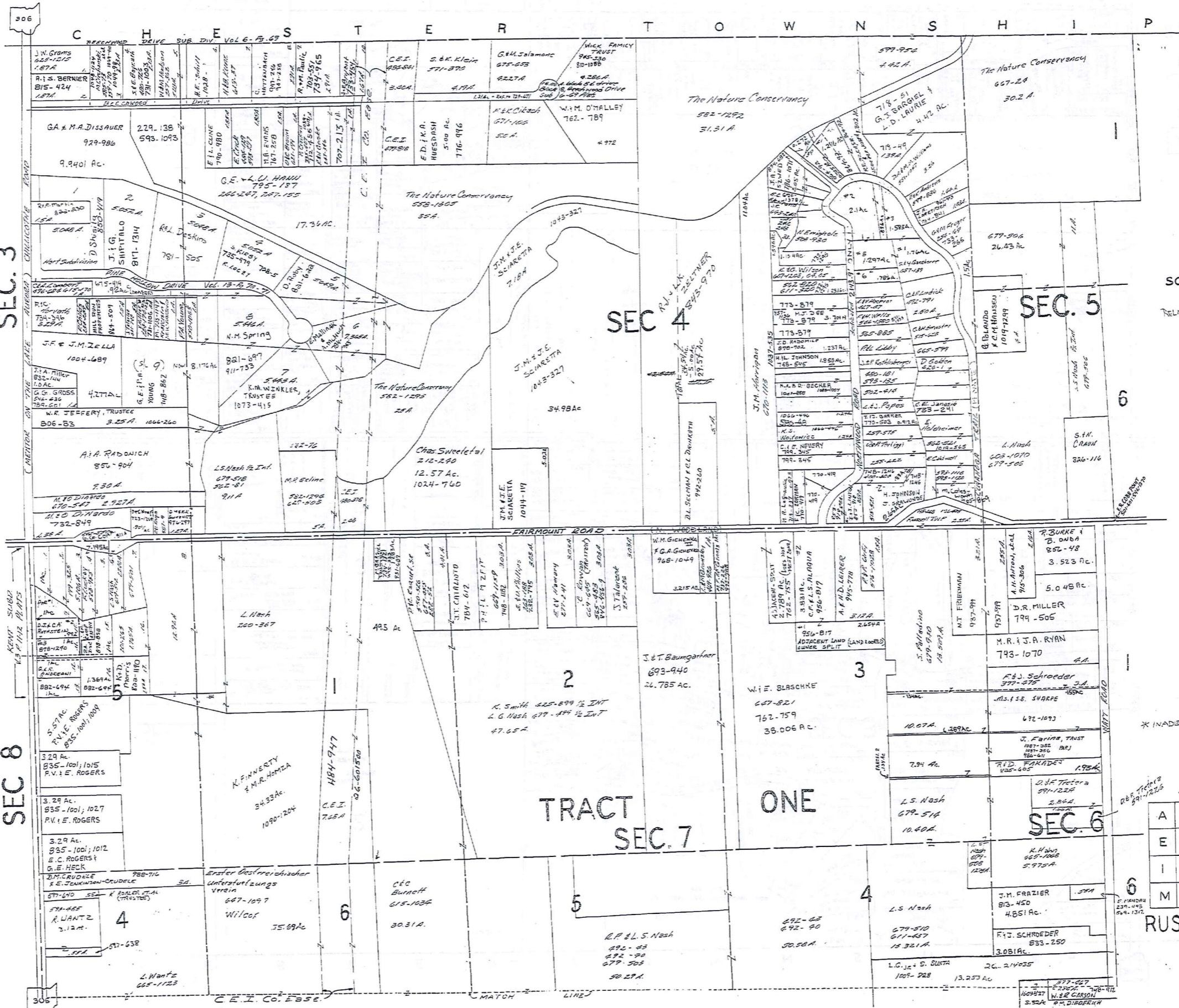
TAX DUPLICATE 37.08 AC
DEEDS = 39.6559 AC
Genoa County Board of Commissioners
516-1111

TAX DUPLICATE 57.09 AC

TRACT ONE
18.50 Ac.
780-1172

RUSSELL LAND CONSERVANCY, INC.

L.H. Mandelic
657-912



SEC. 3

SEC. 4

SEC. 5

SEC. 8

TRACT SEC. 7 ONE

SEC. 6

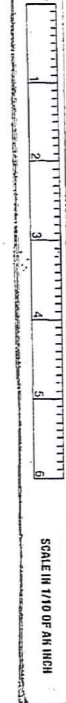
JANUARY 1, 1997

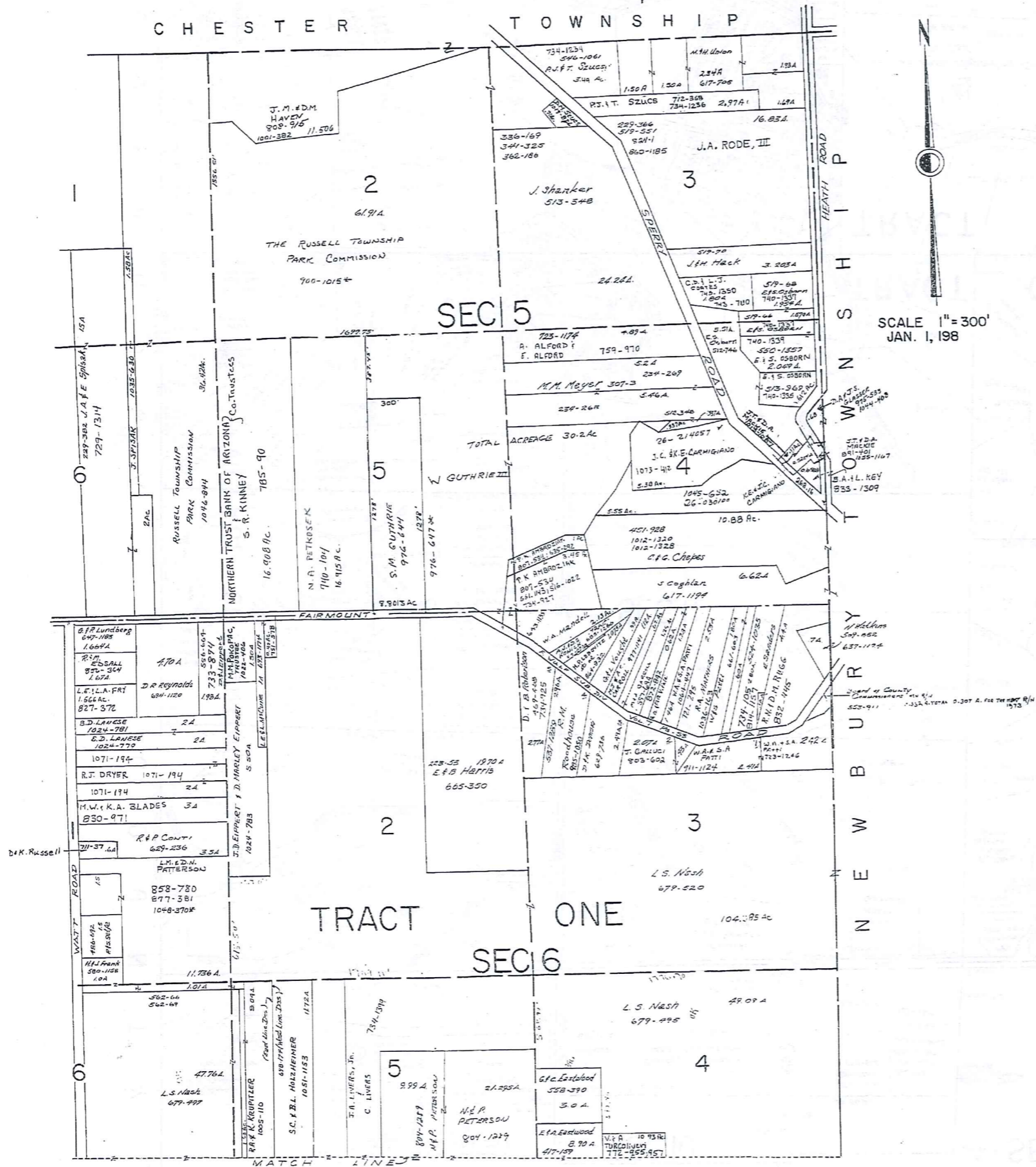
A	B	C	D
E	F	G	H
I	J	K	L
M	N	O	P

RUSSELL-C

SCALE 1" = 300'

TRM-REMI
1-800-345-7334





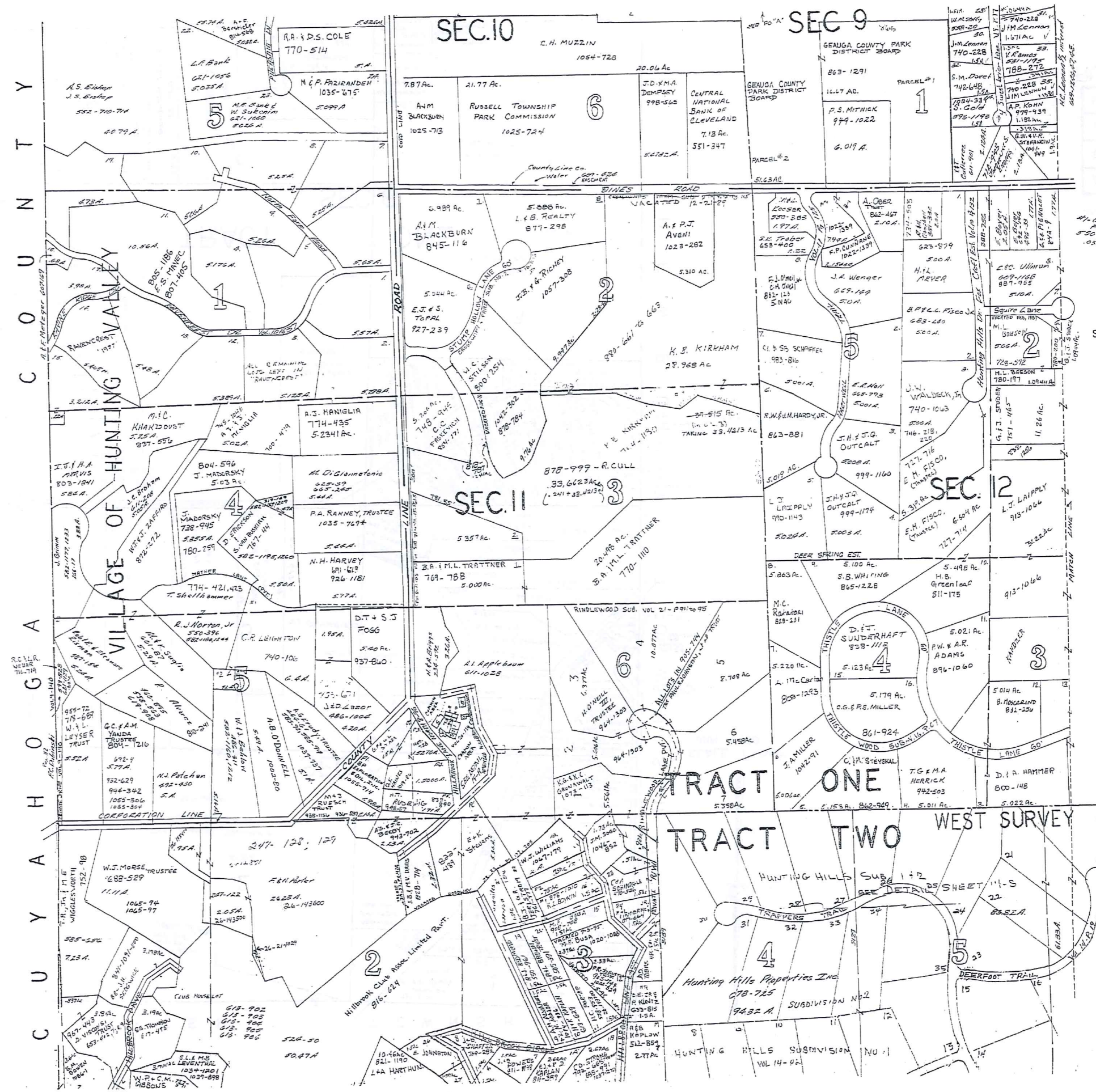
TRM-REDI
 1-800-345-7334
 SCALE IN 1/10 OF AN INCH

* Inadequate Description

JANUARY 1, 1997
RELATIVE REPRESENTATION

A	B	C	
E	F	G	H
I	J	K	L
M	N	O	P

RUSSELL-D



C O U N T Y

V I L L A G E O F H U N T I N G V A L L E Y

R U S S E L L T O W N S H I P

O H I O

C O U N T Y

SCALE 1" = 300

TRIM-REDI
1-800-345-7334
SCALE IN 1/10 OF AN INCH

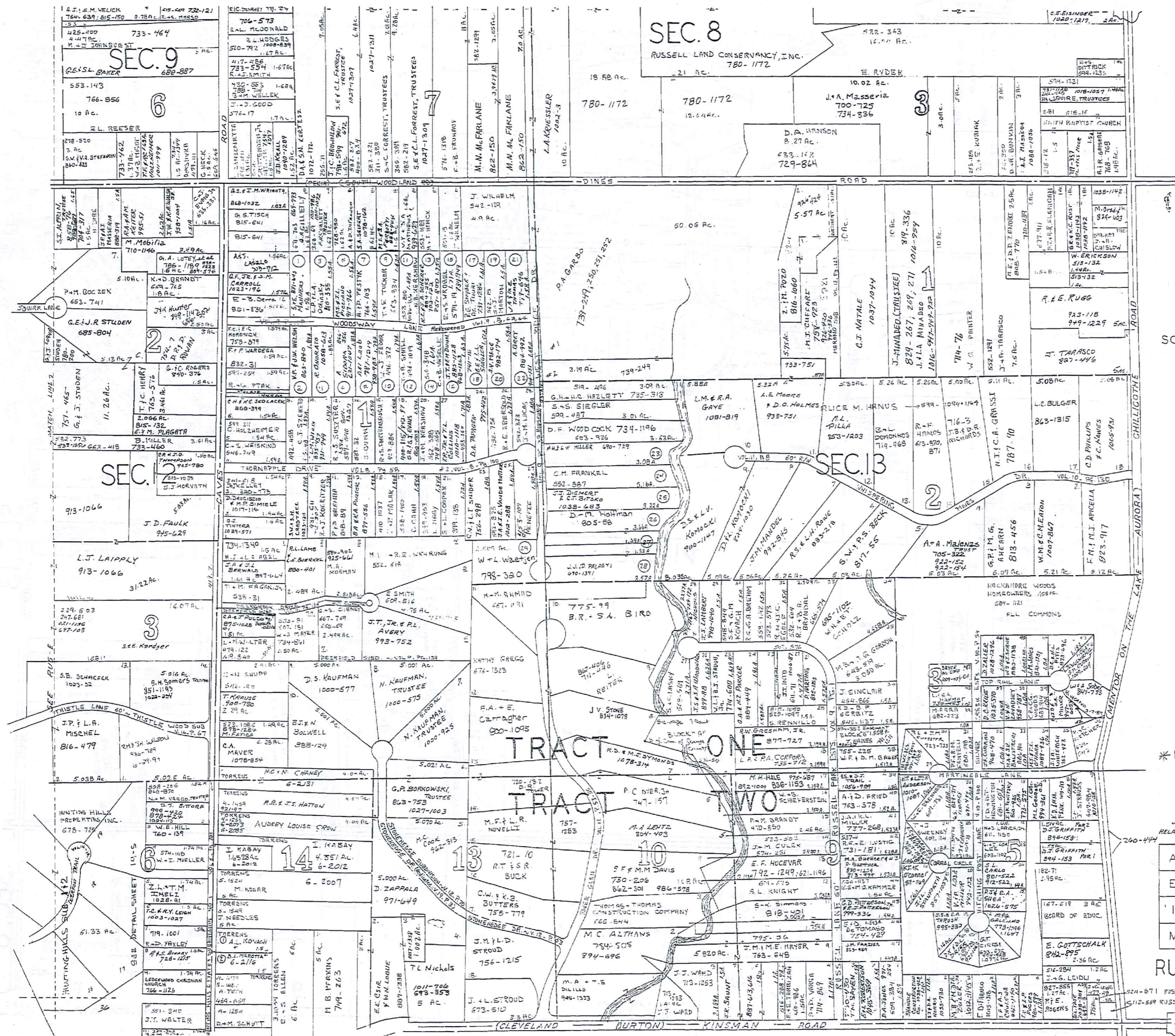
TRACT ONE
TRACT TWO WEST SURVEY

* Inadequate description

JUN 1, 1997
RELATIVE REPRESENTATION

A	B	C	D
E	F	G	H
I	J	K	L
M	N	O	P

RUSSELL-E



SCALE 1"=300'

1-800-345-7334

433

* Inadequate description

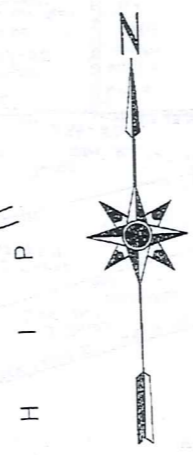
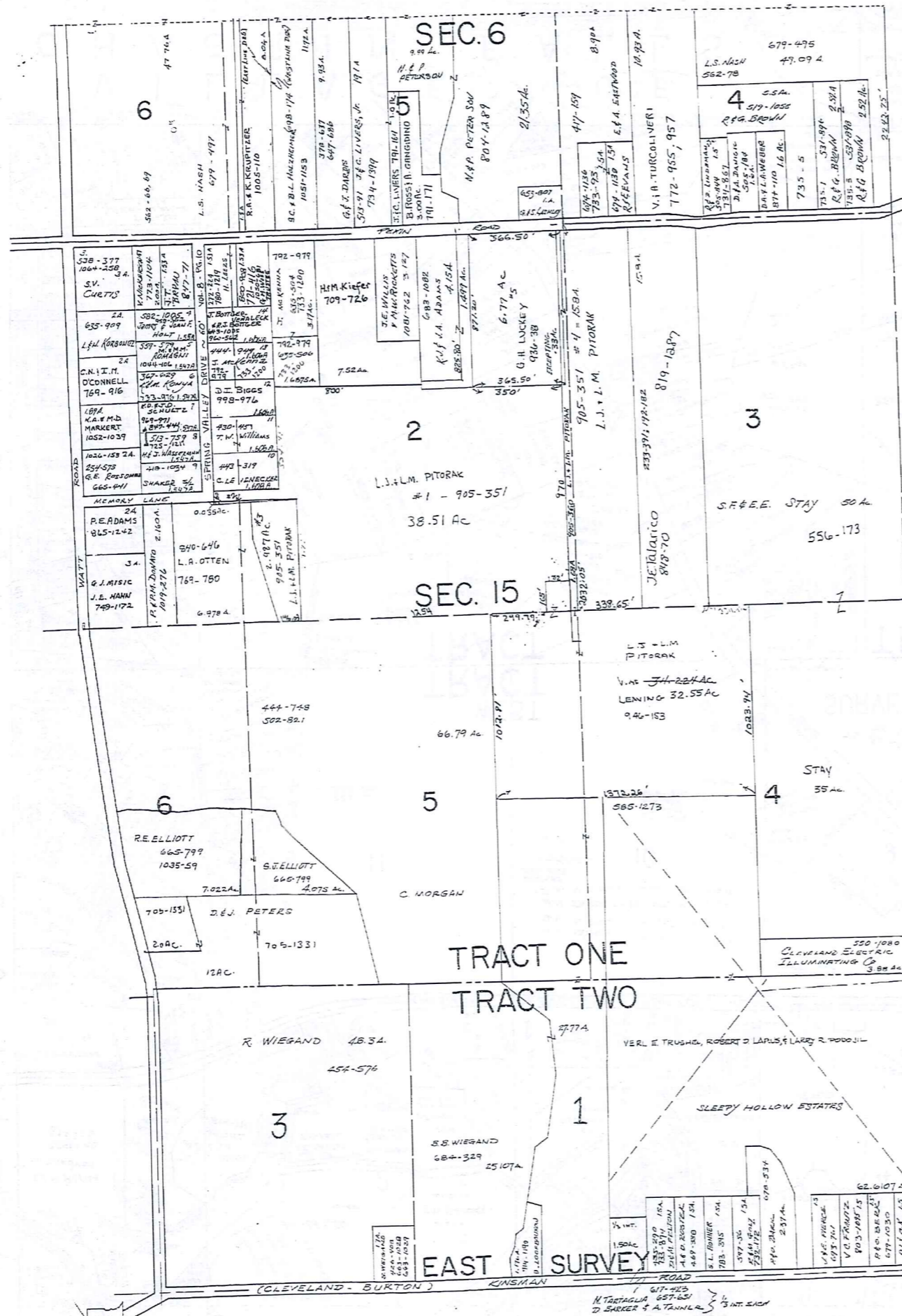
January 1, 1997
RELATIVE REPRERSENTATION

A	B	C	D
E	F	G	H
I	J	K	L
M	N	O	P

RUSSELL-F

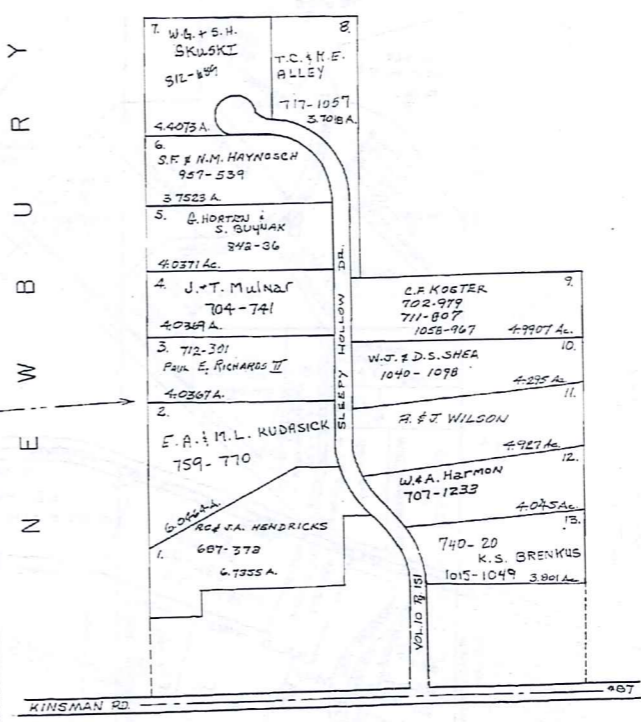
260-444

524-871 RUSSELL TWP
512-559 RUSSELL TWP



SCALE = 1" = 300'
JAN. 1, 198

P
H
I
S
S
U
E
O
F
T
H
E
S
U
R
V
E
Y

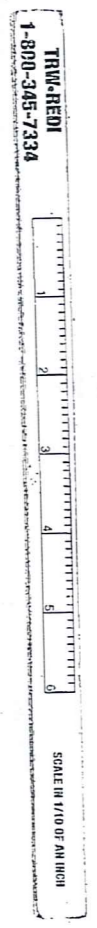


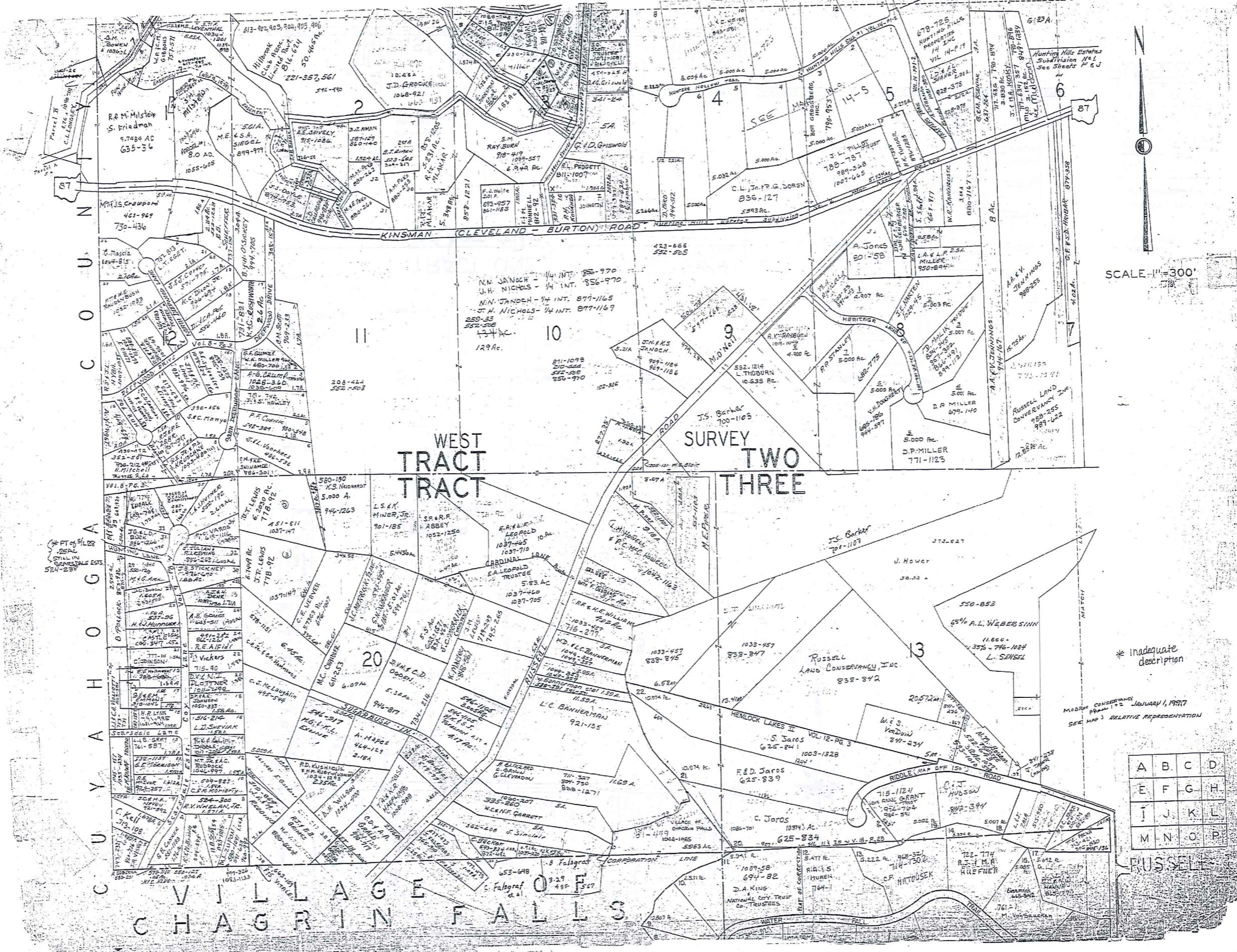
* Inadequate description

JANUARY 1, 1997
RELATIVE REPRESENTATION

A	B	C	D
E	F	G	H
I	J	K	L
M	N	O	P

RUSSELL-H





WEST TRACT
SURVEY TWO THREE

C O U N T Y O F C U Y A H O G A

V I L L A G E O F
C H A G R I N F A L L S

SCALE 1" = 300'

TRW-RED
1-800-246-7334

SCALE IN FT. OF AN INCH

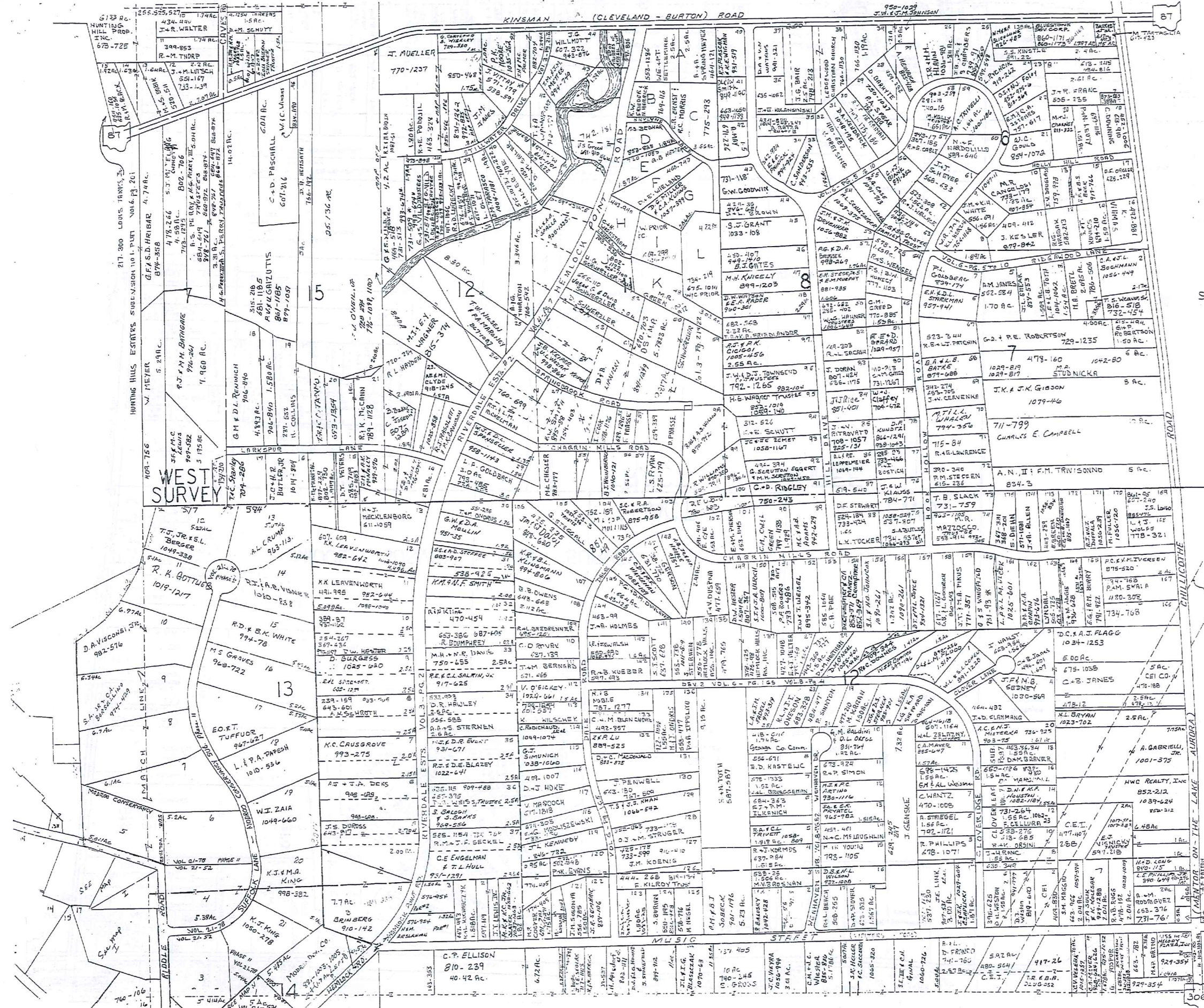
436

A	B	C	D
E	F	G	H
I	J	K	L
M	N	O	P

RUSSELL

* Inadequate description

MODIFIED CONSERVANCY PLAN 12 JANUARY, 1957
SEE MAP 3 RELATIVE REPRESENTATION



SCALE 1" = 300'

TRIM-REDI
1-800-345-7334

437

JANUARY 1, 1997
RELATIVE REPRESENTATION

A	B	C	D
E	F	G	H
I	J	K	L
M	N	O	P

RUSSELL-J

* Inadequate description

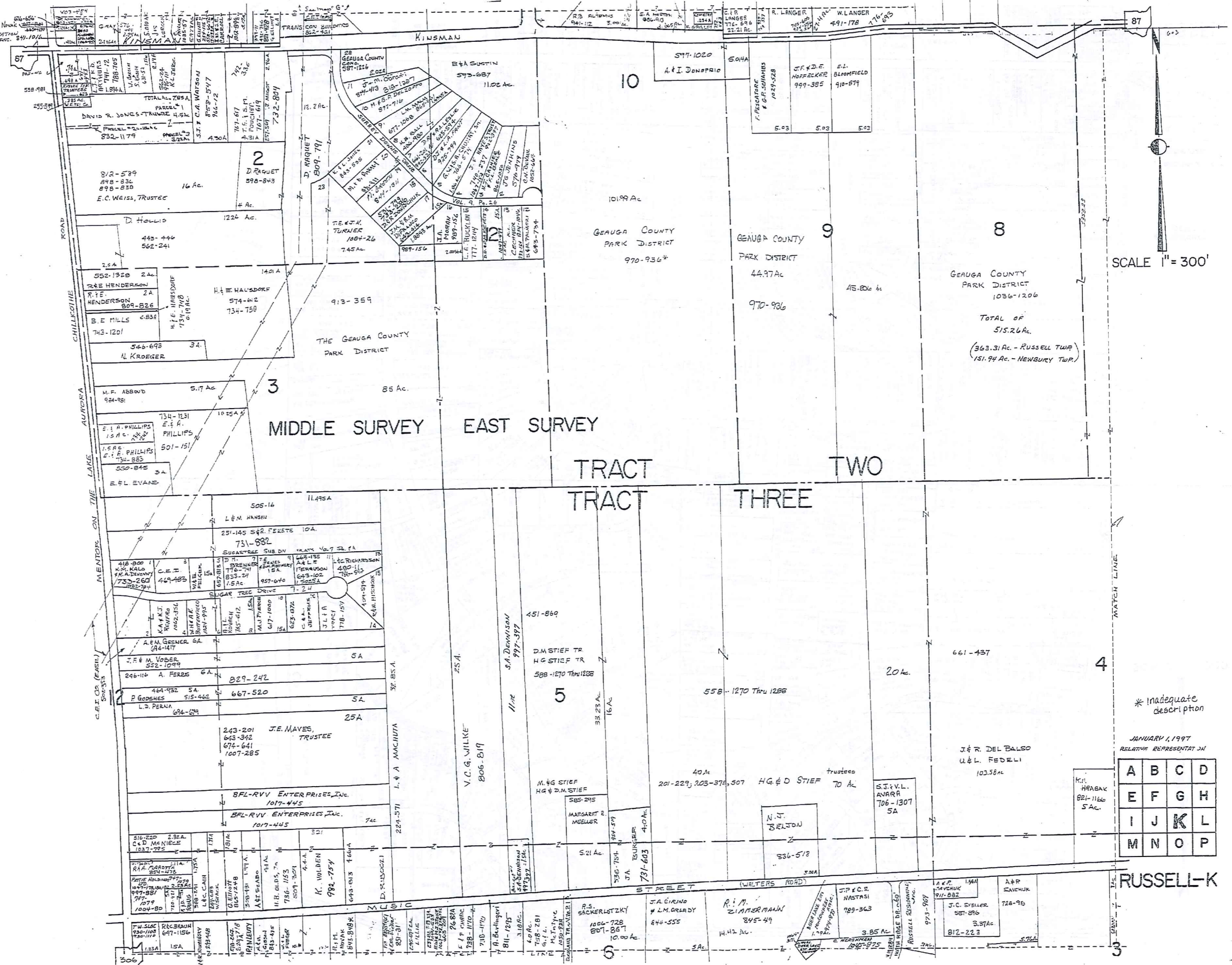
306

SCALE 1" = 300'

TRAW-REDI
1-800-345-7334



SCALE IN YTD OF AIR HIGH



* Inadequate description

JANUARY, 1997
RELATIVE REPRESENTATION

A	B	C	D
E	F	G	H
I	J	K	L
M	N	O	P

RUSSELL-K

ROAD
CHILCOTHE
AUREA
MENTORS ON THE LAKE
C.E.T. CO. (PARCEL)
504-503

WALTERS ROAD
STREET
RUSSELL-K
3

RICHARD A. NOLAN
GOV. STATION
1000 W. 10TH
COLUMBUS, OHIO 43261

506

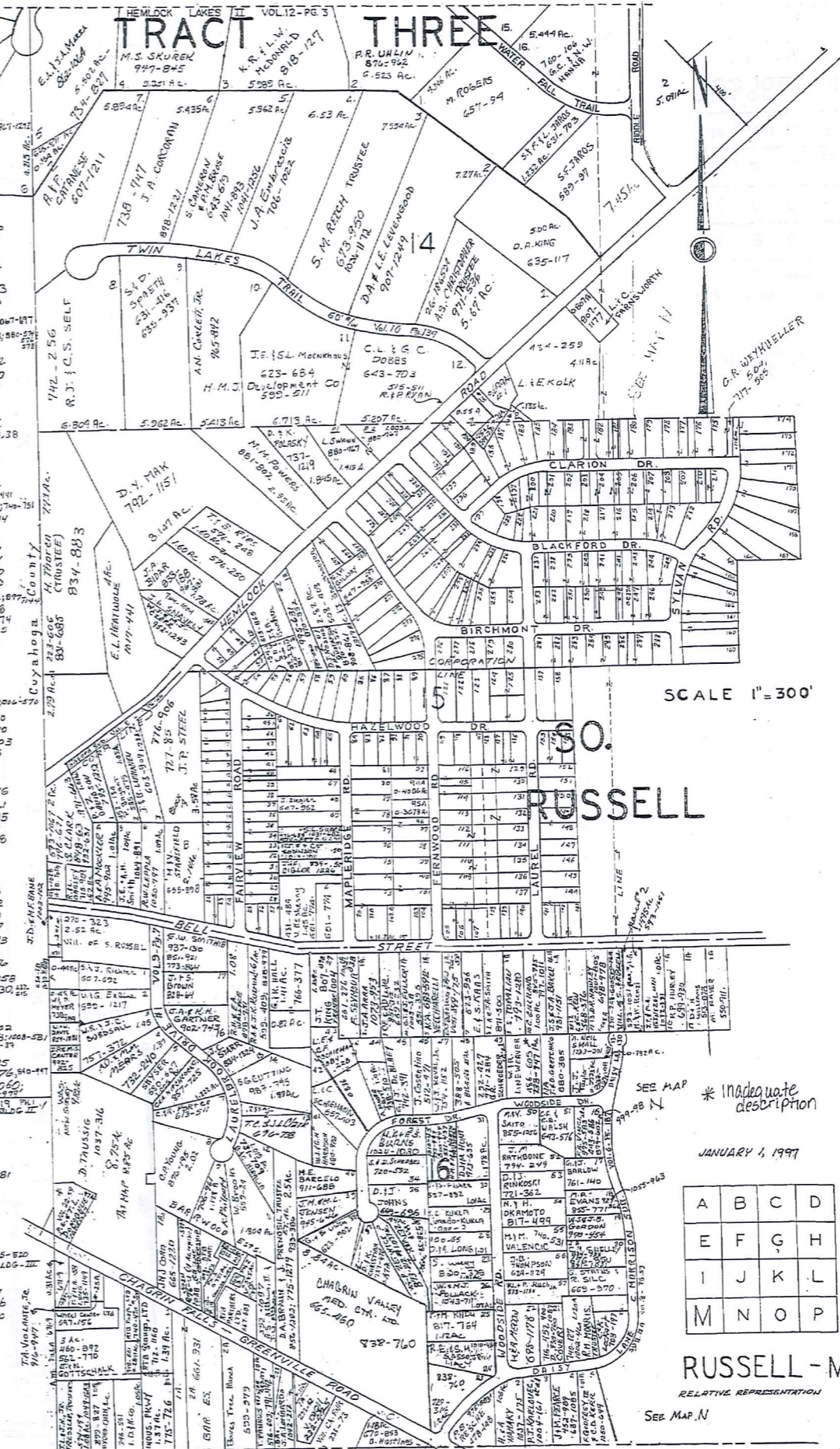
507-508
509-510
511-512
513-514
515-516
517-518
519-520
521-522
523-524
525-526
527-528
529-530
531-532
533-534
535-536
537-538
539-540
541-542
543-544
545-546
547-548
549-550
551-552
553-554
555-556
557-558
559-560
561-562
563-564
565-566
567-568
569-570
571-572
573-574
575-576
577-578
579-580
581-582
583-584
585-586
587-588
589-590
591-592
593-594
595-596
597-598
599-600
601-602
603-604
605-606
607-608
609-610
611-612
613-614
615-616
617-618
619-620
621-622
623-624
625-626
627-628
629-630
631-632
633-634
635-636
637-638
639-640
641-642
643-644
645-646
647-648
649-650
651-652
653-654
655-656
657-658
659-660
661-662
663-664
665-666
667-668
669-670
671-672
673-674
675-676
677-678
679-680
681-682
683-684
685-686
687-688
689-690
691-692
693-694
695-696
697-698
699-700
701-702
703-704
705-706
707-708
709-710
711-712
713-714
715-716
717-718
719-720
721-722
723-724
725-726
727-728
729-730
731-732
733-734
735-736
737-738
739-740
741-742
743-744
745-746
747-748
749-750
751-752
753-754
755-756
757-758
759-760
761-762
763-764
765-766
767-768
769-770
771-772
773-774
775-776
777-778
779-780
781-782
783-784
785-786
787-788
789-790
791-792
793-794
795-796
797-798
799-800
801-802
803-804
805-806
807-808
809-810
811-812
813-814
815-816
817-818
819-820
821-822
823-824
825-826
827-828
829-830
831-832
833-834
835-836
837-838
839-840
841-842
843-844
845-846
847-848
849-850
851-852
853-854
855-856
857-858
859-860
861-862
863-864
865-866
867-868
869-870
871-872
873-874
875-876
877-878
879-880
881-882
883-884
885-886
887-888
889-890
891-892
893-894
895-896
897-898
899-900
901-902
903-904
905-906
907-908
909-910
911-912
913-914
915-916
917-918
919-920
921-922
923-924
925-926
927-928
929-930
931-932
933-934
935-936
937-938
939-940
941-942
943-944
945-946
947-948
949-950
951-952
953-954
955-956
957-958
959-960
961-962
963-964
965-966
967-968
969-970
971-972
973-974
975-976
977-978
979-980
981-982
983-984
985-986
987-988
989-990
991-992
993-994
995-996
997-998
999-1000

CHAGRIN HEIGHTS SUBDIVISION VOL. 3 - PG. 5-6 & 17-18 PLATS

1 GERVA COUNTY S.O.C. (2nd of 4)	621-728	46 S.L. WIEBERG	809-488	91 F.F. VAN LENTE	687-64
2 R.W. & L. KONDAS	969-458	47 R.G. BAONWELL	903-963	92 E. SAVAGE-STERLING	942-211
3 D. Man Fredi	454-836	48		93 B. & S. ESCOTT	1029-114
4 E. Unkrich	615-239	49 T.B. & V.A. MARIGLIA	927-90	94 A.W. GRIFFIN, TRUSTEE	734-545, 807-1211
5 E. Unkrich	800-898, 574-82	50		95 J.F. & T.S. ROCKWELL (Part of 17)	774-325
6 S. OLLAND	615-238	51 G.A. LASH	794-1308	96	
7 C. DIAMOND	574-575	52		97 R.J. & L.S. FRAZIER + 1/2	721-562
8 M. ALSTROM	802-1227, 985-078	53		98 W.D. GRUBLE	668-1308
9 M. Richards	537-536	54		99 F.J. PIPIK	941-143
10 R.K. LOMBARDO	335-576, 611-780	55 P.H. LOY	602-837	100 D. Gosh-Nadler	501-124
11 N. SIMPSON	508-593	56 M.L. BIALOCK	834-651	101	
12 MESHNER (and part of 25)	1017-573	57 S.V. WENDL	732-839	102 R. (102 & 128) & R. (103) J.M. GLAZEN	876-150
13 E. SCHLANSKA	815-198	58 M. TALLION	593-286	103 F. & E. WISNIEWSKI	491-629
14 F. & S. MAY	824-521	59 K. SCOVON	574-1259	104	
15 V.J. MILLER	237-583	60 R.V. YEWEL	667-685	105 C.J. HUNT + 1/2 # 106	245-542
16 H. Fickus, Trustee	733-862, 578-414, 1057-646	61 R. & D.G. RENTON	1015-1160	106 J. H. O'DONNELL + 1/2 # 107	199-1203
17 S. MARCEAU	1047-782	62 M.A. RUPPE	1034-1339	107 T.A. DATCHLOR + 1/2 # 108, 106, 107	741-623
18 P.C. Hoosier TRUST UTA	932-1072, 732-201	63 S.L. & S. FREDERICK	1015-1172	108 B. H. UTTS	757-30
19 J.A.R. PA. SUEZELIS	887-659	64 W. & M. G. G.		109 G.M. GARDIN + 1/2 # 109 AC. TRUSTEE	729-264, 1067-817
20 J. TRUDICK + N. 1/2 of S/4 3/4	625-230	65 B. CLOSE + 1/2 # 66	260-11, 409-23, 487-830	110 F. BISSATTI, LAND TRUSTEE	805-1243, 880-580
21 A.A. GRUZZO	733-50, 484-43	66 E.M. CUNNINGHAM & S.K. LANE	925-746, 974-742	111 R. BISSATTI, LAND TRUSTEE	805-1243, 880-580
22 M.L. WEBER + 1/2 # 40	1053-1009	67 H.D. MERCER	270-362	112 R.W. HERRON	536-778, 674-74
23 T. B. C. C. & W. Thompson, S.O.C.	978-295	68 R. & J. ZIEGLER	551-568	113 M. JONES, TRUST	830-528, 195-882
24 R. R. MOWLS	836-36	69 J.L. LEFFLER	683-548	114 L. LAY, M. HENRY	679-549
25 S.L. WIEBERG	809-428	70 T. SASAKI	691-322	115 M. Metch	689-104
		71 A. O. DIAMOND (N. 1/2 P. 14)	776-867	116	
		72 B. (see 102A)		117 D.J. BROWN	667-924
		73 L.C. GREEN	997-1013	118 R.G. FRANK & P.J. GENSKE	878-1175
		74 W.R. EDWARDS	781-952	119 E.V. CORLETT - 676-1123	667-30, 38
		75 C.W. HUDSON	856-101	120	
		76 P.W. KODSAR	856-101	121 K.J. SHUTTS	734-256, 615-70
		77 J.K. BEARD + 1/2 # 78	814-1141	122	
		78 B.A. RAYMOND 1/2 # 78	954-873	123 J.H. SPANO	695-992
		79		124 J.L. & M.C. POLLOCK, TRUSTEE, PARTNERSHIP, PARTNERSHIP, PARTNERSHIP, PARTNERSHIP	1071-1011
		80 M. & S. SARASER	724-1054	125 H.M. JOHNSON 1/2 # 124, 125	910-1309, 284-57, 174-151
		81 F.G. & M.J. MILLER	88-445, 623-44	126 G. FRAPPIER	766-544
		82 M. & T. TOORBERS	848-538, 637-843	127	
		83 C. FERETTE		128 A. ANIRO	1068-494
		84 K.E. & J.D. SWARTS	734-258	129 L.J. GARRETTA	931-571
		85 J.L. & W. WILLIAMS	1035-111	130 R. & M. D. S. GARIS	430-640
		86 G.M. WYVILLE	987-944	131 W. DORAN	1054-190
		87 S.A. FOULIST	1048-1131	132 S.S. HOLLINGSWORTH	731-536
		88 D. T. CONLEY	529-538	133 J.F. & B. ANOCK	693-942, 897-714
		89 R. L. KANE	1070-984	134 T. R. D. W. V. C. T. R. Y. K. Y.	84-1118
		90 F.F. VAN LENTE	687-64	135 T.S. MCCARTHY	502-1035

CHAGRIN FALLS

136 R.H. & A. OWEN	1073-955	136 M. & G. GRATZL	855-557	256 J.H. JOHNSON 1/2 # 257	812-548
137 S. SCHMIDT & P. SCHMIDT	378-455, 633-221	137 I. SHAPIRO	1020-312	257 E.M. SHANLEY + 1/2 # 258	1008-104, 760-267, 950-570
138 J. NELSON	922-445	138 D.H. WALLACE + 1/2 # 139	1053-974	258 F.H. KING	706-1070
139 SINDLER (and part of 138)	718-909	139 R.L. BEANSUCK & M.A. NAYLOR, TRUSTEE	1010-854	259 F.H. KING	706-1070
140 J. & G. SYRANS + 1/2 # 139	501-385	140 K.S. WELLMAN + 1/2 # 200	903-232	260 D.V. REITZ HILL	1005-803
141 R.T. TROPP + 1/2 # 142	501-385	201 W.L. & G. STREET	994-437	261 D.R. DAVIS + 1/2 # 262	613-85
142 N. JOHNSON & K. ROGERS (CO. TRUSTEE)	802-549, 835-559	202 R. & M. EARLY + 1/2 # 101 + 1/2 # 209	470-603	262	
143 J. J. AMASHY (and part of 142)	780-183	203 T.S. MARY & E.E. 3/4 # 201 + 1/2 # 202	924-872	263 F.H. & D. D. 1/2 # 202	749-914
144 E. T. KATZ	980-1242, 479-824, 898	204 R. & M. EARLY + 1/2 # 101 + 1/2 # 209	470-603	264 D.V. SUTUFF	593-716
145 M.C. JANTZ	776-966	205 T.S. MARY & E.E. 3/4 # 201 + 1/2 # 202	924-872	265 T.G. & J.M. WILLIAMS	1070-321
146 J. & V. B. CAIN	970-333	206		266 G.S. & M.M. O'BRIEN	950-685
147 J. KENNETH HOWELL	667-422	207 C.R. & K.R. COLDWELL 1/2 # 201 + 1/2 # 208	716-809	267	
148		208		268 G.R. & K.A. GILWAY	647-958
149		209 S. & M. WEEBER + 1/2 # 209 + 1/2 # 210	757-724	269	
150 P. MARZ & J. MARZ	874-382, 362-333	210 K.R. SCHWELCHEL	629-100	270	
151 D.J. EGLESTON	879-276	211		271	
152 C.A. & R. LIECHTY	859-1189	212 P.B. MCCLAIN	919-878, 884-889, 815-1277	272 C.E. FINCH	944-864
153 H.C. KONKIN	785-853	213 I. SPEAR	1060-185	273 C.S. BLAKE & J.L. ANKETT	967-442
154 L.M. AHLMAN	1045-889	214 M.B. & M.E. TART. 1/2 # 214	1022-774	274 S.P. & L.H. BOHLER	1024-800
155		215		275 S.T. & T. FURY	904-221, 568-527
156		216 M.R. MANN	716-1020	276 T.F. & M.L. WENNERSTROM	925-693
157 J.F. & G. WOODHURSTON-WHITE	1081-1335	217		277	
158 D.D. BARRIGALL	974-22, 285-172	218 J.F. LEVY	770-255, 703-652	278 W.L. LOUSWAY	841-156
159 T. & A.M. FARJAD	1035-664	219		279 D.M. VOSS	705-1358
160 + 1/2 # 161 T. & A.M. FARJAD	1035-662	220 W.F. & A. SENG FINEY TRUST	887-154	280 C.F. & B. STULL	272-630, 312
161 S. KRIDER	376-273	221 L.F. HECKMAN	968-442	281 H.A. STEVEN + 1/2 # 282	320-6
162 W.M. WELLS + 1/2 # 161	791-312	222 J.M. & C.M. PANZARO (W. 1/2 # 222)	968-442	282	
163 R.S. & K.Z. DEUTSCH	980-128	223		283 J.N. JACOPOVIC	1052-282
164		224 C. THOMAS + 1/2 # 225 + 1/2 # 226	304-204	284 T.T. BLAIR	285-188, 1008-581
165 + 1/2 # 164 J. & S. J. B. J. KOTAPISH	789-1122, 1191	225		285	
166 B. & J.D. KLEN	1002-121	226 S. ALEXANDER + 1/2 # 226	727-825	286 S.K. & A.N. ARTHUR 1/2 # 286	895-675
167		227 D.V. SUTLIF	593-716	287 S.A. ARTHUR + 1/2 # 286	526-176, 810-411
168 D.C. & M.C. COHAN	830-499	228		288 C.B. KNOWLES, JR.	558-1066
169 D.C. & M.C. COHAN	834-684	229 J.H. MARSHALL 1/2 # 229	876-1105		
170		230 D.S. & B. DOMACKI + 1/2 # 230 + 1/2 # 231	776-215		
171 K.L. FORD, JR.	768-1177	231			
172 J.T. HARGRAVE	914-1101	232 I. & M. KONIG + 1/2 # 232 + 1/2 # 233	512-941		
173		233			
174 C.R. Weymuller	717-504	234 R.P. GILBERT	611-679		
175		235			
176 1/2 # R.B. FREDMAN	857-903	236 J.M. RUNGE + 1/2 # 235	617-557		
177		237 M. VOORHEES + 1/2 # 238 + 1/2 # 239	818-492		
178		238 S.C. & C.J. ZACHARY	930-924		
179		239			
180 J.C. & M.M. GULLO + 1/2 # 181	920-303	240			
181		241 J.A.J. Broyles + 1/2 # 242 + 1/2 # 240	812-679		
182 K.L. LARRY + 1/2 # 181 + 1/2 # 182	811-156	242 A.E. WALKER	1089-910		
183 R.S. NOVAK	702-97	243 J.A. VLAH	867-1		
184		244 F.E. & R.A. DIRDA	867-1		
185 R.D. NAGIE + 1/2 # 184	551-1007	245			
186 L. BARRIBALL	751-312	246 M.S. WHITMAN	565-84		
187		247 G. & J.L. SHELTON	792-994		
188		248			
189 M.G. GRATZL	855-557	249 J.C. ALBERT + 1/2 # 250	802-25		
190		250 M.G. HARROLD & C. REINHARDT	682-278		
191		251			
192		252 M. & J. TURNER	270-536		
193 J. & M. BROWN + 1/2 # 194	1071-439, 1071-432	253 M.A.O. BROWN + 1/2 # 252	580-1000		
194 M.G. GRATZL	855-557	254 Z.G. HANKINS	971-478		
195		255 K. & P. CONRAD	743-1094		
196					
197					
198					
199					
200					
201					
202					
203					
204					
205					
206					
207					
208					
209					
210					
211					
212					
213					
214					
215					
216					
217					
218					
219					
220					
221					
222					
223					
224					
225					
226					
227					
228					
229					
230					
231					
232					
233					
234					
235					
236					
237					
238					
239					
240					
241					
242					
243					
244					
245					
246					
247					
248					
249					
250					
251					
252					
253					
254					
255					



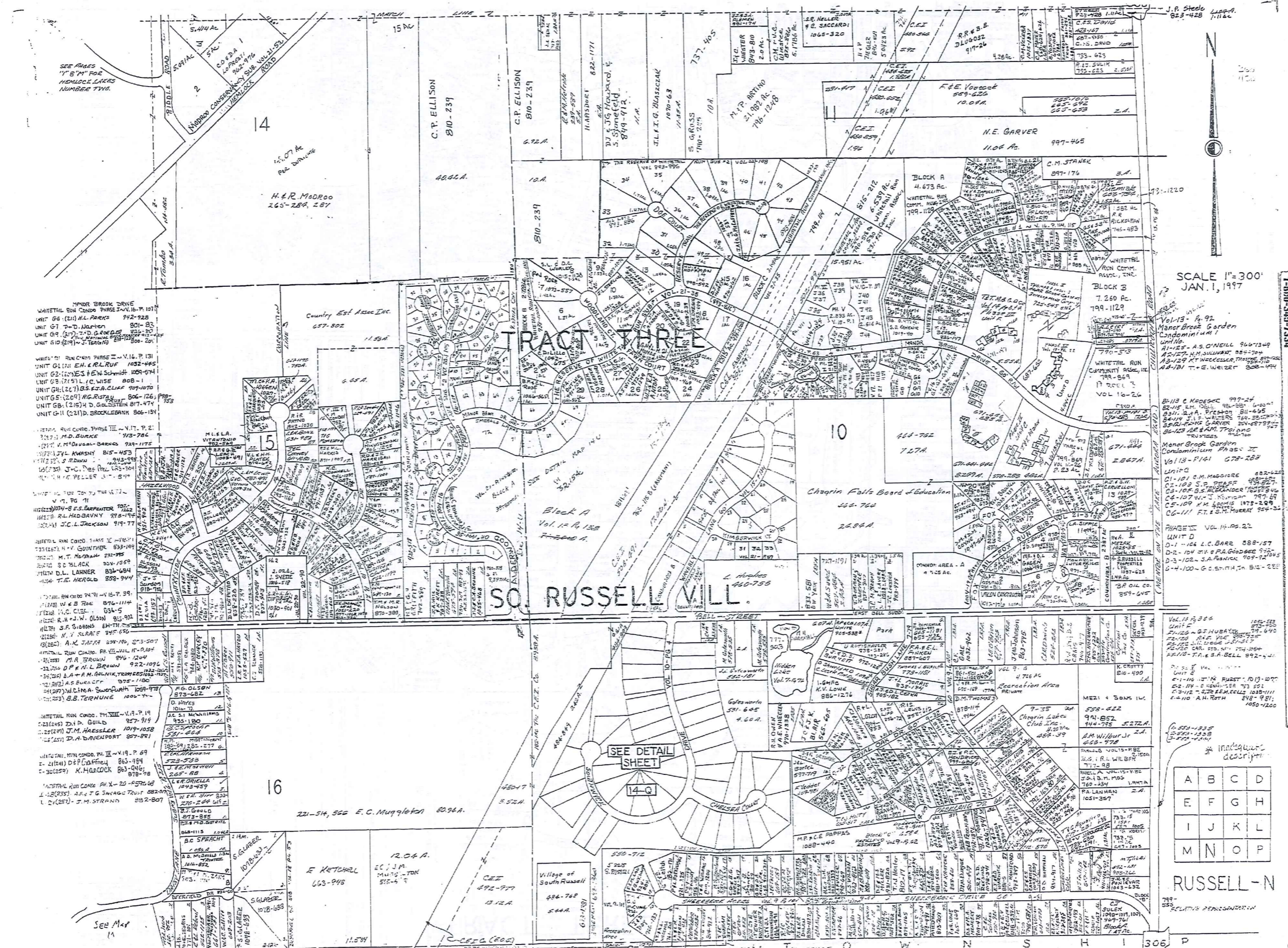
TRIMMED
1-800-345-7338

SCALE 1" = 300'

440

* Inadequate description

JANUARY 1, 1997



SEE PAGES 'N' & 'M' FOR HEMLOCK LAKES NUMBER TWO.

MANOR BROOK DRIVE
 WHITETAIL RUN CONDO PHASE I, V. 16, P. 107
 UNIT G6 (211) AL PARKS 942-728
 UNIT G7 P.D. NORTON 801-83
 UNIT G8 (217) C. D. BRENDEL 801-83
 UNIT G9 (218) C. D. BRENDEL 801-83
 UNIT G10 (219) J. T. GARDNER 806-20

WHITETAIL RUN CONDO PHASE II, V. 16, P. 131
 UNIT G11 (220) E.H. & R.L. RUF 1032-445
 UNIT G12 (221) S.E. SCHMIDT 1032-445
 UNIT G13 (222) L.C. WISE 808-1
 UNIT G14 (223) B.S. & J.A. CLIFF 909-1070
 UNIT G15 (224) R.G. RUSTAY 806-126, 898-753
 UNIT G16 (225) H.D. GOLDSTEIN 817-474
 UNIT G17 (226) D. BROCKLEBANK 806-134

WHITETAIL RUN CONDO PHASE III, V. 17, P. 2
 UNIT G18 (227) M.D. BURKE 913-786
 UNIT G19 (228) M. DUBOVAL-GARNO 909-1175
 UNIT G20 (229) J.L. KAWASHY 815-453
 UNIT G21 (230) J. R. BROWN 843-955
 UNIT G22 (231) J.C. DEE 103-704
 UNIT G23 (232) M. L. PELLER 317-547

WHITETAIL RUN CONDO PHASE IV, V. 17, P. 11
 UNIT G24 (233) R.S. BARNETT 902-722
 UNIT G25 (234) R.L. MADDOX 913-142
 UNIT G26 (235) J.C. JACKSON 914-77

WHITETAIL RUN CONDO PHASE V, V. 17, P. 12
 UNIT G27 (236) M.T. MADDOX 913-142
 UNIT G28 (237) S.C. LACK 824-1569
 UNIT G29 (238) D.L. LANNER 834-684
 UNIT G30 (239) T.E. HEROLD 852-944

WHITETAIL RUN CONDO PHASE VI, V. 19, P. 69
 UNIT G31 (240) D.P. GARDNER 813-184
 UNIT G32 (241) K. HANCOCK 863-046
 UNIT G33 (242) J.M. STRAND 892-807

WHITETAIL RUN CONDO PHASE VII, V. 19, P. 69
 UNIT G34 (243) D.P. GARDNER 813-184
 UNIT G35 (244) K. HANCOCK 863-046
 UNIT G36 (245) J.M. STRAND 892-807

WHITETAIL RUN CONDO PHASE VIII, V. 19, P. 69
 UNIT G37 (246) D.P. GARDNER 813-184
 UNIT G38 (247) K. HANCOCK 863-046
 UNIT G39 (248) J.M. STRAND 892-807

SCALE 1"=300'
 JAN. 1, 1997

THW:RED
 1-800-345-7334

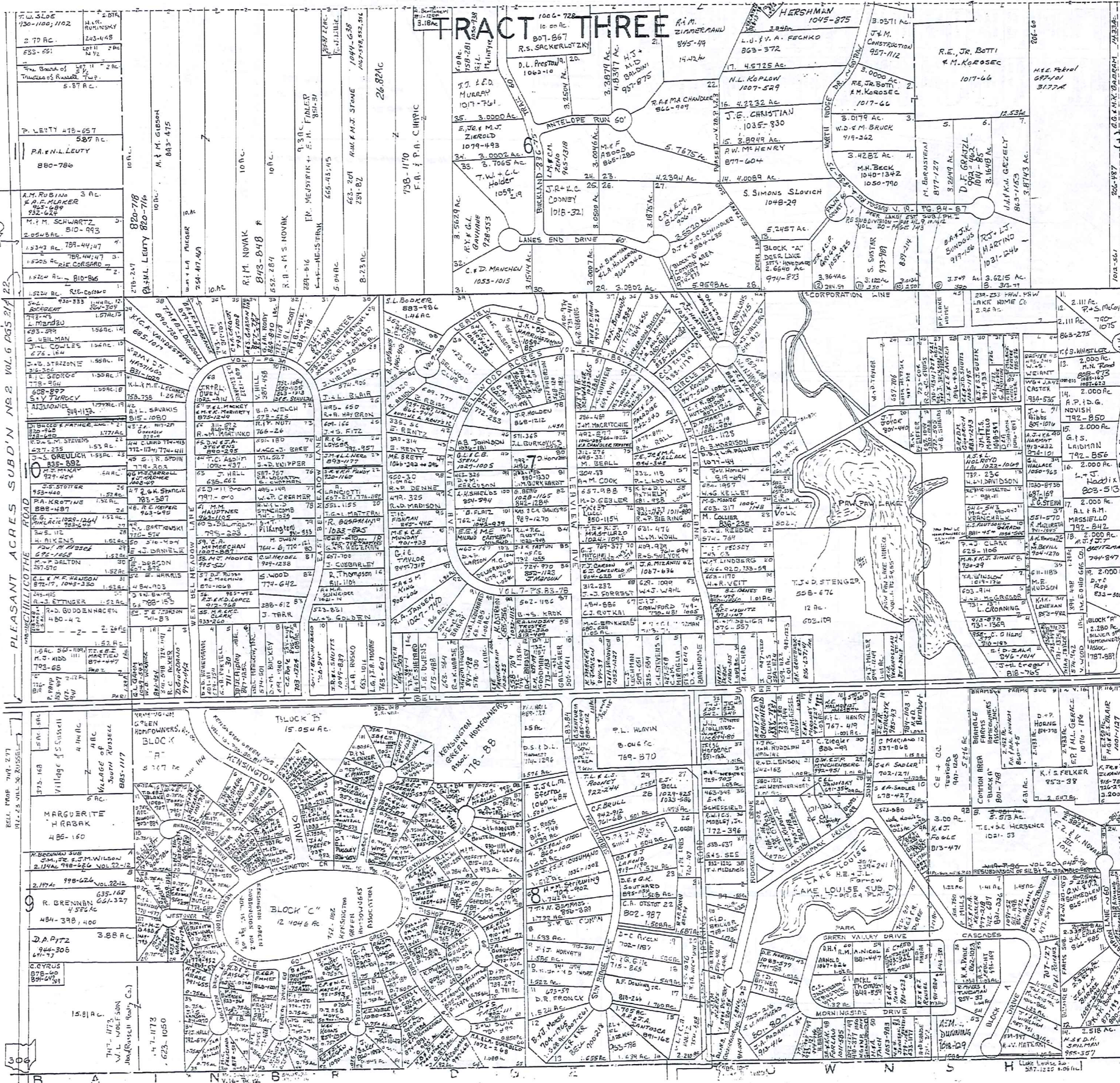
Vol. 11, P. 22
 UNIT F
 F-1-101 G. J. HUBERT 1050-528
 F-1-102 R. G. HUBERT 873-550
 F-1-103 R. G. HUBERT 873-550
 F-1-104 L. D. DOUGLAS 747-640
 F-1-105 CAR. FED. 774-1054
 F-1-106 T. R. B. BELL 892-441

Vol. 11, P. 22
 UNIT G
 G-1-101 J. M. RUST 713-1077
 G-1-102 E. HENNINGER 713-521
 G-1-103 S. J. REMICK 1038-1111
 G-1-104 A. H. ROTH 848-981
 G-1-105 1050-1200

A	B	C	D
E	F	G	H
I	J	K	L
M	N	O	P

RUSSELL-N

799-555
 SCALE IN FEET OR INCHES



M.E. & J.L. FARRON
Lake Louise
Vol. 304 Pgs 239+241
Sub. Pl. Vol. 7 P. 64

1	589	897	R.V. MATERNI
2	754	754	G.M. YAEGER
3	752	472	R.C. GANBERG
4	707	127	R.C. ROEMAN
5	477	647	C.C. GOODRICH
6	827	127	G.A. BAMBERGER
7	827	127	K.E.M. KEESLER ST-210
8	501	750	R.H. MILLS
9	827	284	H. GAYNE 889-1519
10	678	477	S.R.A. SADLER 677-949
11	702	127	S.A. Sadler
12	537	868	G. MARIANO 840-541
13	784	1103	N.E.D. BARNHART
14	815	471	K.J.T. FOOLE

SCALE 1"=300'
JAN. 1, 1997

11	825	47	S.E.R. STANCZYK
12	578	928	A.K. MALMQUIST
13	751	257	E.R. MORNAY TRUSTEES; 997-589
14	751	257	M.E.T. RYDDEL
15	804	783	R.W.M.D. SCHENFELD
16	480	42	REN. RUDOLPH
17	342	163	REB. LEONARD
18	386	1218	W.C. WEATHERHEAD
19	406	74	LAKE LOUISE SUB
20	522	924	SEK. HOLLIES
21	701	116	K.E.L. JENKINS
22	4	4	"
23	922	951	C.W.L.P. MYNCHENBERG
24	822	99	G.Z. FOLLO
25	550	828	T.E.J. JOHA
26	542	346	"
27	851	122	T.C.E.S.E. HERBERER
28	772	763	B.A. WEBSTER
29	463	348	E. SCHEFFIELD
30	772	396	R.W.E.C.S. MOBLEY JR.
31	538	637	G.G. & J. SEE
32	832	1202	T.J. MCDANIELS
33	416	479	"
34	261	135	"
35	574	412	J.B. TRIP
36	914	1049	D.L.M.D. COOPERIDER
37	74	183	G.S.D. NORTH
38	771	132	G.E.D. BIRCH
39	801	807	K.C. MATHEWS
40	542	92	S. COLEMAN
41	522	128	"
42	486	260	H.L. BAKER 944-240
43	410	377	C. HANSON 923-616
44	420	843	W.W. GODWIN
45	728	1939	A.G. SMITH
46	231	262	M.B. JOHNSON TRUSTEES
47	231	262	A.E.D. KRAUSE
48	245	1081	C.D. STEPHENS 997-849
49	854	33	R. MYERS & T. NEWMAN
50	406	169	R.S. FEUCHT
51	862	1023	L.G. PAYNE
52	625	389	H.D. MARRA
53	436	502	E. RUTTENWALK
54	881	447	A. NICOL
55	562	436	T.V. RIEHL
56	538	725	C.S. J.S.P. WILSON TRUSTEE
57	849	534	M.E.K.L. THOMPSON 1077-100
58	480	623	S.E.B. KRAM
59	754	1011	N.G.E.R. DE REE
60	754	1011	"
61	754	1011	"
62	754	1011	"
63	754	1011	"
64	754	1011	"
65	754	1011	"
66	754	1011	"
67	754	1011	"
68	754	1011	"
69	754	1011	"
70	754	1011	"

A	B	C	D
E	F	G	H
I	J	K	L
M	N	O	P

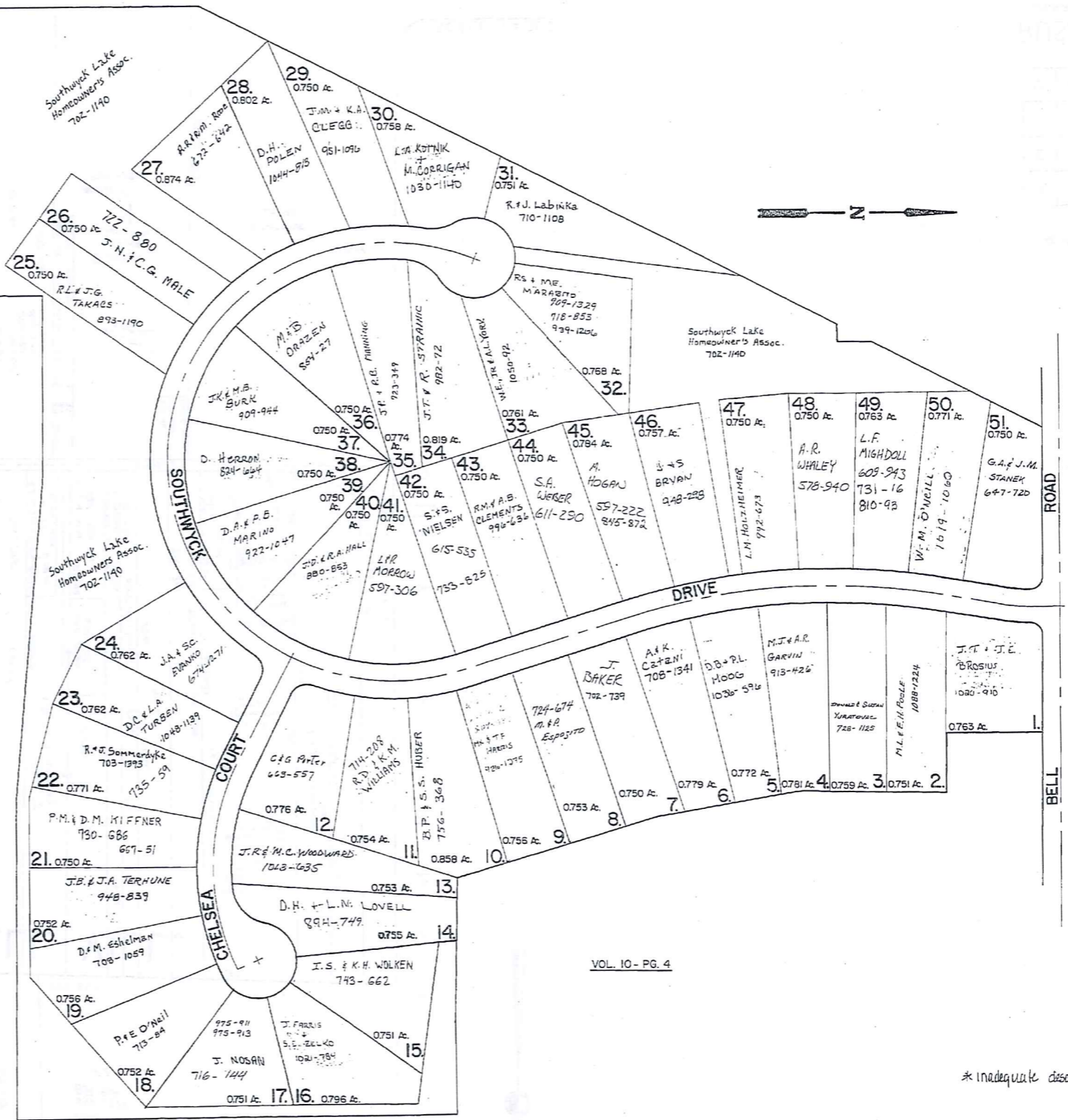
* Inadequate description
Indicates survey on file with tax map page.

RUSSELL-0

RELATIVE REPRESENTATION

TRAIL-HEAD 1-800-245-7334 SCALE 1"=100' OF AN INCH

VILLAGE OF SOUTH RUSSELL
WASTE WATER TREATMENT
PLANT SITE
5.440 A.
(0.29 A. BAINBRIDGE TWP.)



TOWNSHIP
BAINBRIDGE
RUSSELL

VOL. 9 - PG. 101

SHEERBROOK ACRES

VOL. 10 - PG. 4

TOWN-REDI
1-800-345-7334
SCALE IN 7100 OF AN INCH

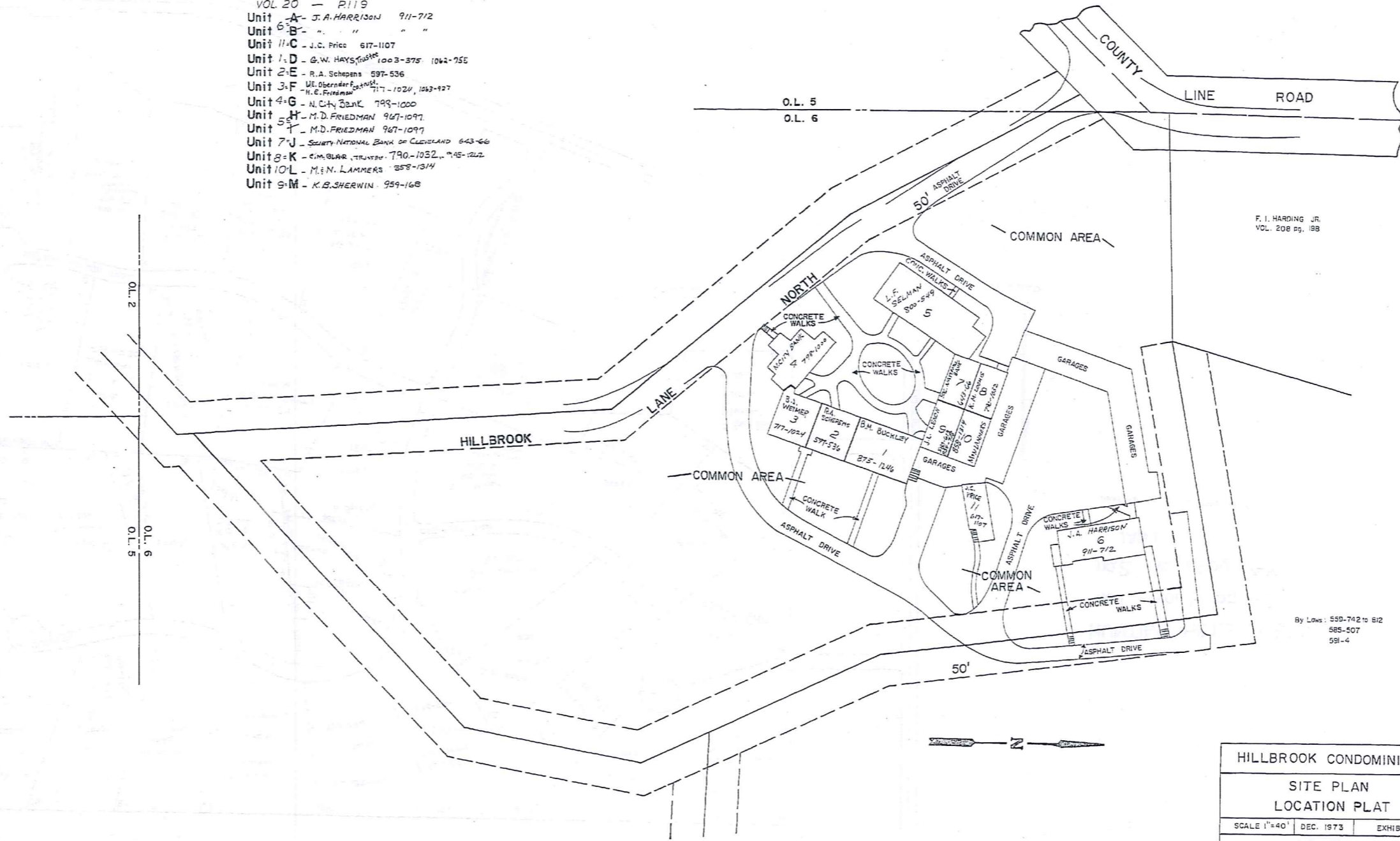
SHEERBROOK ACRES NUMBER 2

JAN. 1, 1997

* Inadequate description

AMENDED
HILLBROOK CONDOMINIUM

- VOL 20 - P119
 Unit A - J.A. HARRISON 911-712
 Unit B - " " " "
 Unit C - J.C. PRICE 617-1107
 Unit D - G.W. HAYS 1003-375 1062-755
 Unit E - R.A. SCHEPENS 597-536
 Unit F - U.E. OBERDORFER 717-1024, 1063-927
 Unit G - N. CITY BANK 799-1000
 Unit H - M.D. FRIEDMAN 967-1097
 Unit I - M.D. FRIEDMAN 967-1097
 Unit J - SECURITY NATIONAL BANK OF CLEVELAND 643-66
 Unit K - KIM BLAIR, TRUSTEE 790-1032, 745-1212
 Unit L - M.E.N. LAMMERS 858-1314
 Unit M - K.B. SHERWIN 959-168



F. I. HARDING JR.
VOL. 208 pg. 188

By Laws: 550-742 to 812
585-507
591-6

TMM:HEB1
 1-800-345-7334
 SCALE: 1/10" OF AN INCH

445

HILLBROOK CONDOMINIUM		
SITE PLAN		
LOCATION PLAT		
SCALE 1"=40'	DEC. 1973	EXHIBIT B
14 - R RUSSELL		

Recorded Vol. 10 pg. 39
AMENDED VOL 20 - P119 8-11-92

JAN. 1, 1997

RELATIVE REPRESENTATION
* Inadequate description



HUNTING HILLS SUBDIVISIONS. 1&2.
 no.1. vol. 14 pg. 1-2.
 no.2. vol. 14 pg. 17-19.
 JAN 1,
 HUNTING HILLS PROPERTIES, INC.

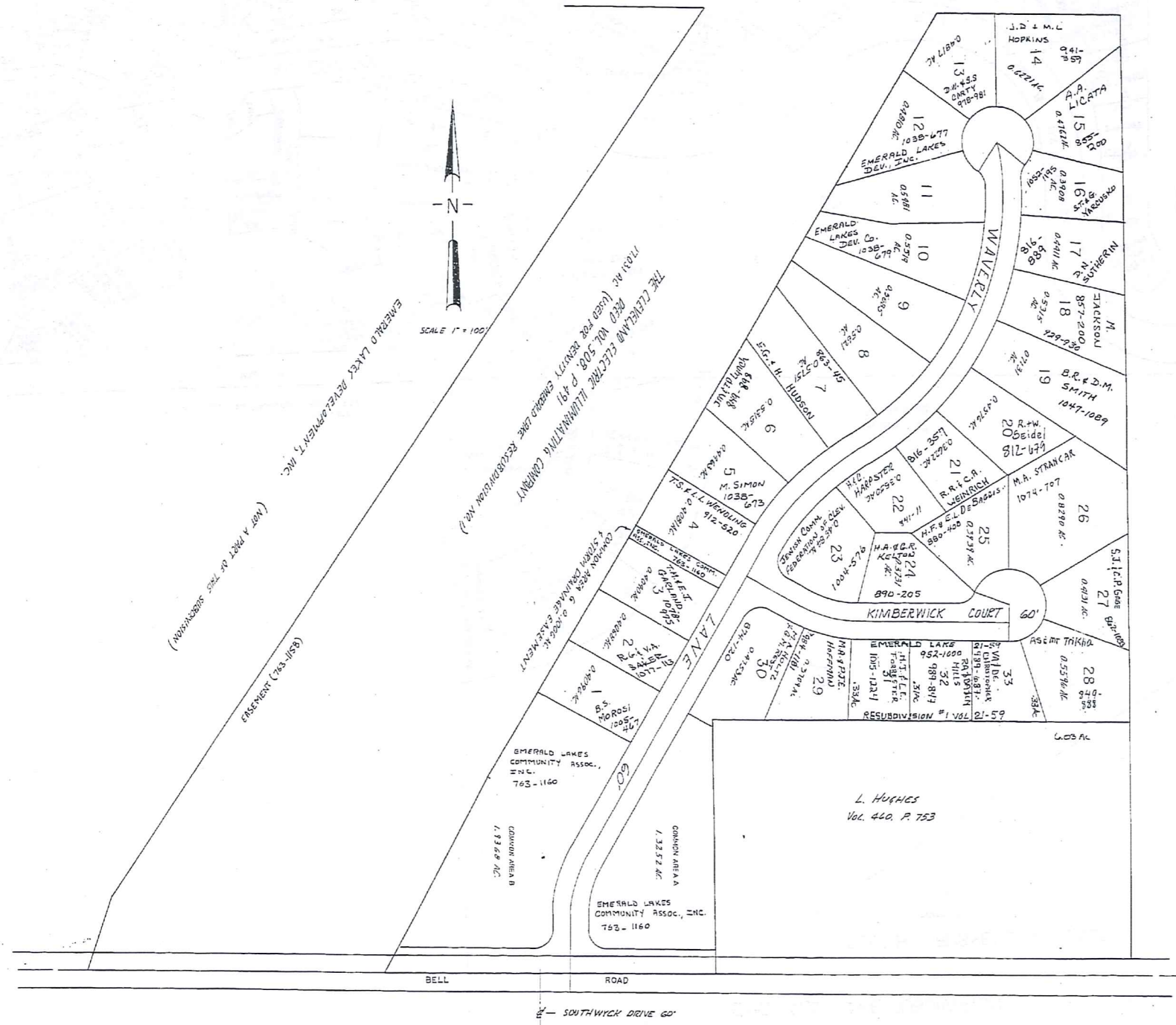


TRM-REDI
 1-800-345-7334
 SCALE IN 1/100 OF AN INCH

* Inadequate description

JANUARY 1, 1997
 RELATIVE REPRESENTATION

T & T CONSTRUCTION Co.
Vol. 235, P. 600



EMERALD LAKE
 SUBDIVISION NO. 1
 VOL. 15 - PG. 107, 108 &
 RESUBDIVISION NO. 1
 VOL. 15 - PG. 134, 135

1" = 100'

JANUARY 1, 1997

* Inadequate description

1-800-345-7334

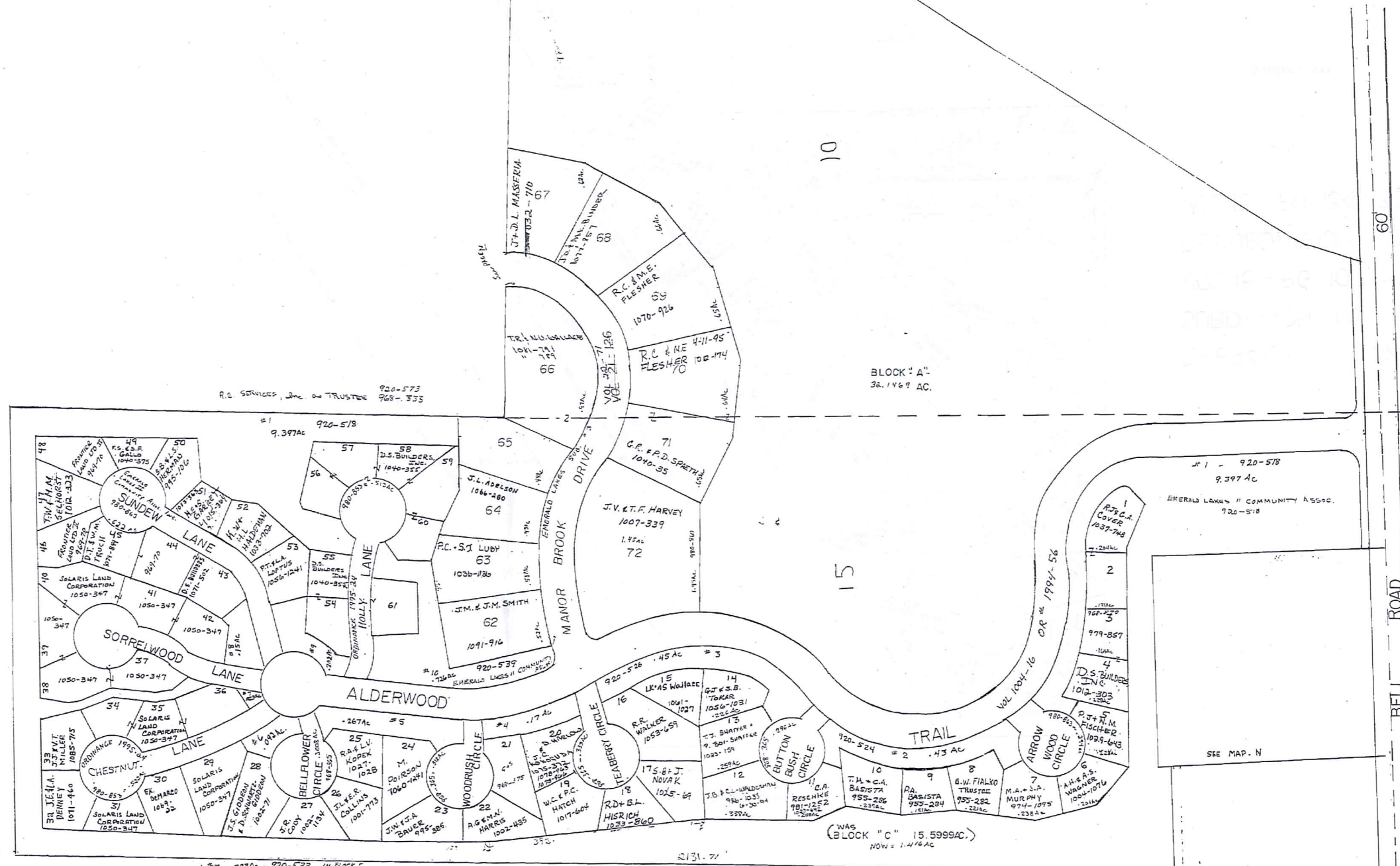
THRU-REDI

SCALE IN 1/10 OF AN INCH

EMERALD LAKE SUBDIVISION NO. 2 VOL. 20-145

SOUTH RUSSELL VILLAGE

TRACT 3



#7 - .023 AC - 920-533 - IN BLOCK C
 964-333 - R.E. SERVICES, INC. TRUSTEE
 969-361 - EMERALD LAKES DEV. INC.
 969-365 - EMERALD LAKES II COMMUNITY ASSOC. INC.
 980-833 - EMERALD LAKES DEV. INC.
 980-843 - EMERALD LAKES II COMMUNITY ASSOC. INC.

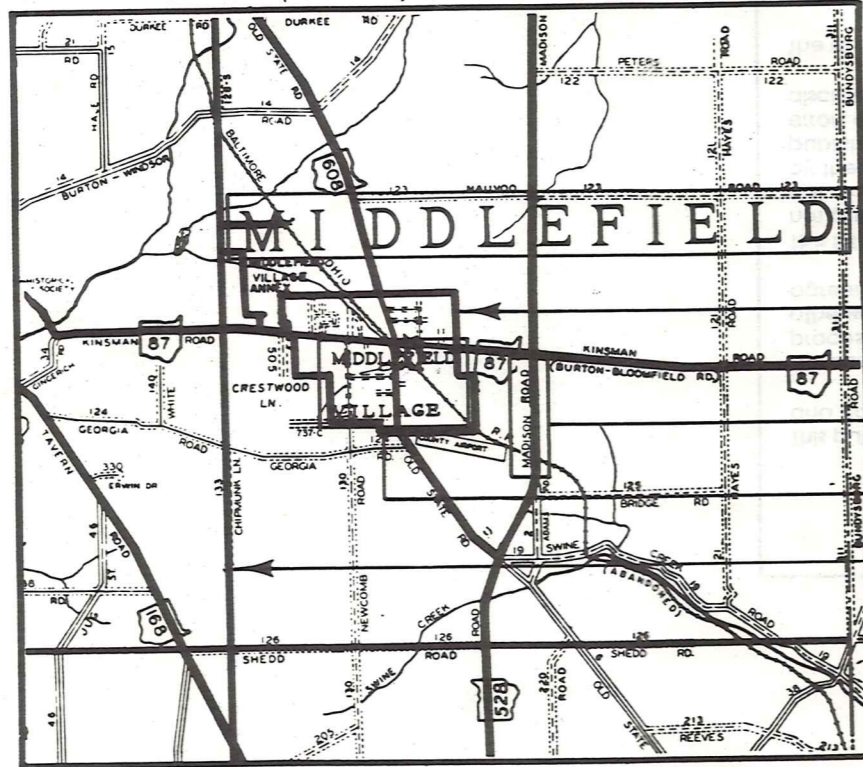
SCALE 1" = 100' JANUARY 1, 1997
 RELATIVE REPRESENTATION
 SUBDIVISION PLAT VOL. 20-Pg. 145



Explanation and Use Sheet for Geauga County, Ohio

A

SAMPLE (PARTIAL) COUNTY INDEX MAP



Tract Lot Number

Acreage

Township Name

Village Boundary

Street Name

Village Name

Township Boundary

Owners Name

Denotes Continuous Ownership

Deed Book & Page

Map Page Number

Township Name

Village Name

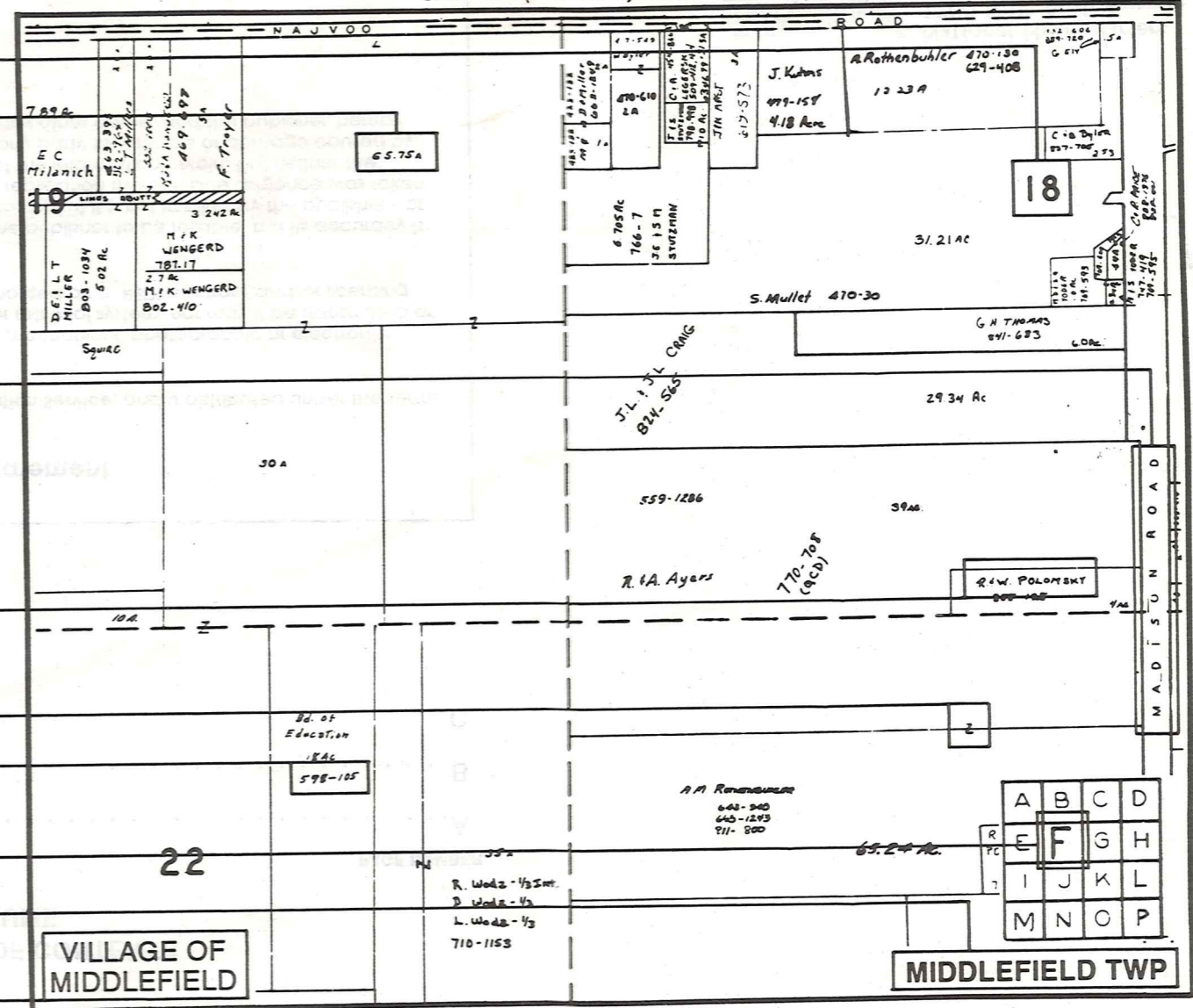
Village Boundary

Street Name

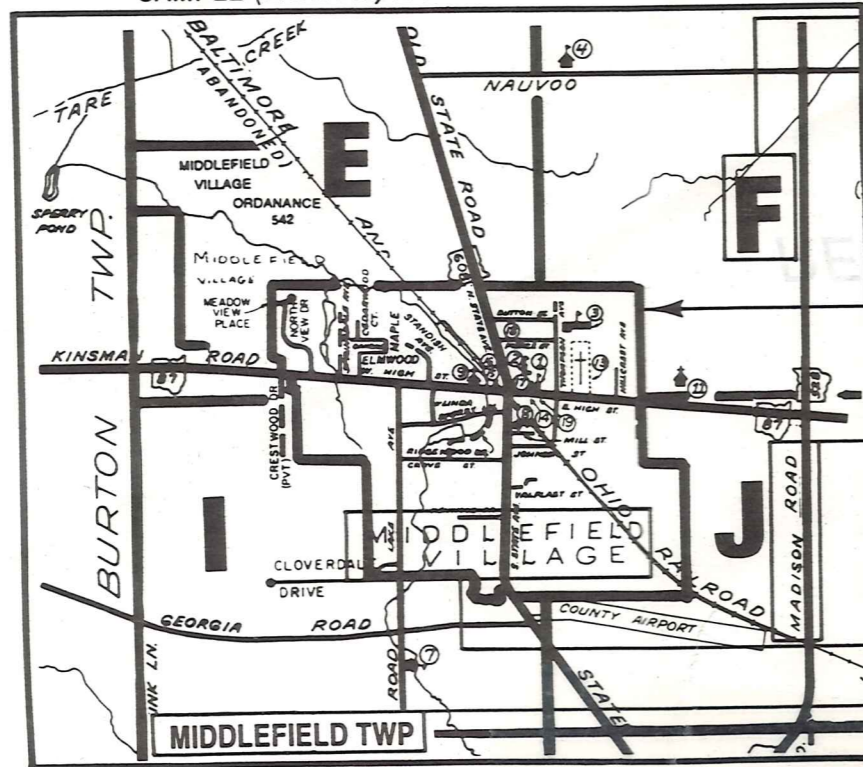
Village Name

Township Name

SAMPLE (PARTIAL) MAP PAGE



SAMPLE (PARTIAL) MUNICIPALITY INDEX MAP



USE OF THE MAP VOLUME

- LOCATE THE GENERAL AREA OF INTEREST ON THE COUNTY INDEX MAP AND NOTE THE MUNICIPALITY NAME (TOWNSHIP OR VILLAGE).
 - REFER TO THE TABLE OF CONTENTS AND NOTE THE BEGINNING ATLAS PAGE NUMBER FOR THE MUNICIPALITY OF INTEREST.
 - TURN TO THE PAGE INDICATED, ON THIS PAGE WILL APPEAR AN INDEX MAP FOR THAT MUNICIPALITY.
 - LOCATE THE GENERAL AREA OF INTEREST AND NOTE THE MAP PAGE NUMBER. THIS MAY BE EITHER A LETTER OR A NUMBER.
 - MAP PAGES ARE IN ALPHABETICAL (OR NUMERICAL) SEQUENCE FOLLOWING THE MUNICIPALITY INDEX MAP. FOLLOW SEQUENCE TO THE MAP PAGE INDICATED.
 - LOCATE SPECIFIC PARCEL OF INTEREST AND NOTE THE DESIRED INFORMATION.
- NOTE: ON SOME MAPS YOU MAY BE REFERRED TO A DETAIL SHEET SHOWING AN ENLARGEMENT OF THE AREA. THESE MAPS ARE FOUND AT THE END OF THE REGULAR MAP PAGES IN EACH MUNICIPALITY IN EITHER ALPHABETICAL OR NUMERICAL SEQUENCE.
- NOTE: CHARDON VILLAGE HAS TITLE SHEETS. TO LOCATE OWNERS NAME, NOTE THE PARCEL NUMBER, REFER TO THE TITLE PAGE FOLLOWING THE MAP OF INTEREST, FOLLOW NUMERICAL SEQUENCE TO THE PARCEL NUMBER OF INTEREST AND NOTE THE DESIRED INFORMATION. IN ALL OTHER MUNICIPALITIES THE OWNERS NAME APPEARS ON THE MAP PAGE.